

TB1016E

TravelBus TB1016E はPCのUSB3.0ポートに接続して使う、ロジックアナライザとプロトコルアナライザ両方の機能を備えた高性能ツール。立野電脳(株)から即納可能です。

Acute TravelBus 2 in 1 Analyzer (Protocol & Logic)



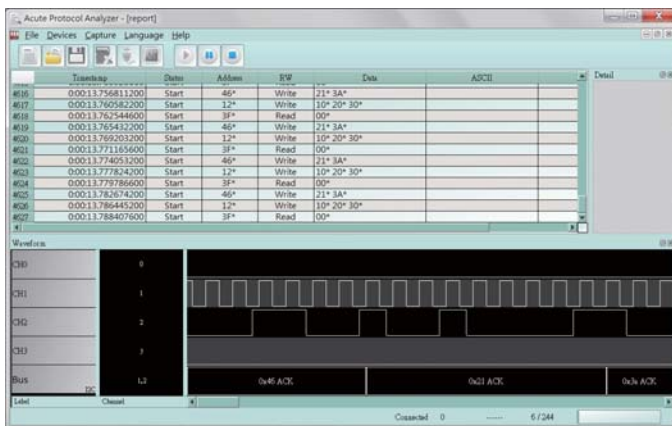
- PC-based, **USB 3.0** interface/powered
- **200 MHz** timing/state analysis
- Digital channels : 16 (Data), 1 (Clock), 2 (I²C)
- Memory : PC RAM
- Data logger
- Real time data display and post-capture waveform display

• Module I
 Protocol Analyzer : HID over I²C, I²C, I²S, LIN 2.2, MDIO, PMBus, RS232, SMBus, SPI, USB1.1

- Module II
 - Protocol Analyzer : CAN 2.0, DALI 2.0, Modbus, Profibus, RS422, RS485
 - Differential channels : 2 (CAN2.0), 4 (RS422/485)
 - Stackable with Acute TravelScope DSO to form an MSO
 - Isolated : CAN/RS485 (>1000Vrms)
- Module III
 Protocol Analyzer : BiSS-C, PWM, USB PD 3.0
- Bus Decode : I²C, I²S, LIN2.2, SMBus, PWM, SMBus, SPI, UART, USB PD 3.0, ... (60+ decodes)

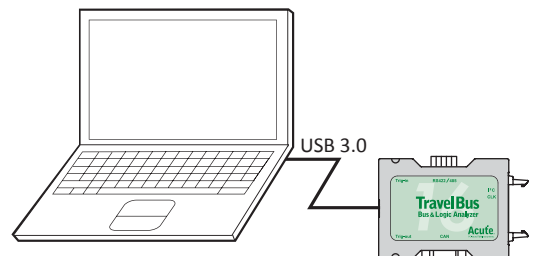
Model	Channels	Module	Bus Decode	DSO stack
TB1016F	19	I ² C, RS232, SPI	YES	No
TB1016E	19	I	YES	No
TB1016B	25	I, II	YES	Yes
TB1016B+	25	I, II, III	YES	Yes

Software Window



System Requirements

- USB 3.0 port
- XP(32bit), Win 7/8/10(32 / 64 bits)



立野電脳(株)はAcute Technologyの国内正規代理店です。お問い合わせは、sales@dsp-tdi.comへどうぞ

Acute

PC-based T&M Instruments

Acute Technology Inc.

Tel: +886-2-2999-3275 E-mail: service@acute.com.tw <http://www.acute.com.tw>

立野電脳 EXT営業部
E-mail : sales@dsp-tdi.com
〒198-0063 東京都青梅市梅郷5-955 TEL.0428-77-7000

URL <http://www.dsp-tdi.com/>



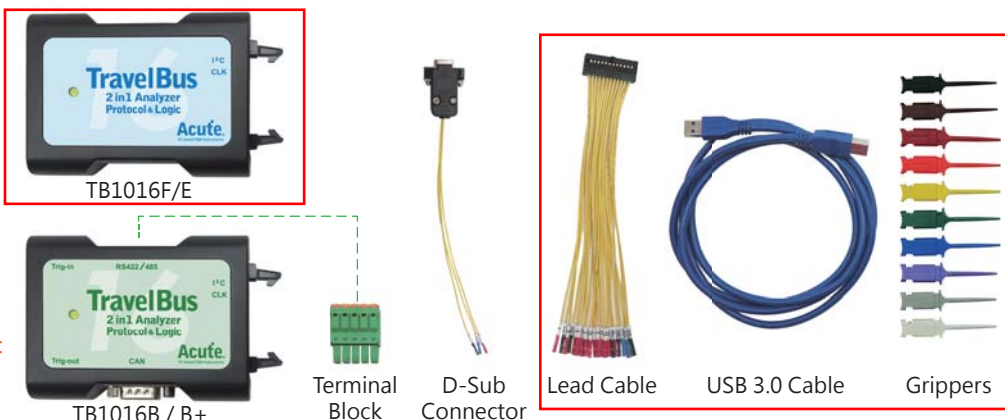
TravelBus series

Model	TB1016F	TB1016E	TB1016B	TB1016B+
Power Source	USB bus-power (+5V)			
Power	Static Power Dissipation			
	Max Power Dissipation			
Hardware Interface	USB 3.0			
Timing Analysis (Asynchronous, Max. Sample Rate)	200 MHz ¹			
State Clock Rate (Synchronous, External Clock)	200 MHz ¹			
Channels (Data / CLK / I ² C / CAN / RS485)	16 / 1 / 2 / - / -		16 / 1 / 2 / 2 / 4	
Resolution	5 ns			
Channels	16 (Max.)			
Conditions	Yes (4)			
Pre/Post Trigger Setting	Yes			
Pass Counter	Yes (0 ~ 65536 times)			
Event Types	Channel, Pattern, Single, Width, Time-out, External			
Module	I ² C, RS232, SPI		---	
Trigger	Module I	---	HID over I ² C, I ² C, I ² S, LIN2.2, MDIO, PMbus, RS232, SMBus, SPI, USB1.1	
	Module II	---	CAN 2.0, DALI, Modbus, Profibus, RS422, RS485	
	Module III	---	USB PD 3.0	
Input port (for Stack)	---		TTL 3.3V	
Output port (for Stack)	---		TTL 3.3V	
Range	-6V ~ +6V			
Resolution	50mV			
Threshold Accuracy	±100mV + 5%*Vth			
Input Voltage	Maximum			
	Sensitivity			
Impedance	200KΩ // <5pF			
Temperature	Operating Temperature			
	Storage Temperature			
Protocol Analyzer	Protocol Analyzer	I ² C, RS232, SPI		---
	Module I	---	HID over I ² C, I ² C, I ² S, LIN2.2, MDIO, PMbus, RS232, SMBus, SPI, USB1.1	
	Module II	---	CAN2.0, DALI2.0, Modbus, Profibus, RS422, RS485	
	Module III	---	BiSS-C, PWM, USB PD 3.0	
Software features	Bus decode	1-Wire, 3-Wire, 7-Segment, AccMeter, ADC, APML, BiSS-C, BSD, CAN 2.0/FD, CEC, Close Caption, CODEC_SSI, DALI 2.0, DMX512, DP Aux ² , EDID, Line Decoding, Line Encoding, HDLC, HDQ, HID over I ² C, I ² C, I ² C EEPROM, I ² S, ITU-R BT.656 (CCIR656), IrDA, JTAG, LCD1602, LED_Ctrl, LIN2.2, LPT, M-Bus, Math, MDIO, MHL Cbus, Microwire, Modbus, NEC IR, PECE, PMBus, Profibus, PS/2, PWM, QI, RC-5, RC-6, SGPIO, Smart Card, SMBus, SMI, SPI, SSI, ST7669, SWD, SWP, UART, UNI/O, USB 1.1, USB PD 3.0, Wiegand		
Dimension	L x W x H (mm ³)		96x74x24	
Lead Cable	24-pin			
Grippers	5	10	20	

¹ Measure signal under 14 MHz ONLY due to data transmission limitation. ² Choose DP AUX extender card.

Packing list

Item	Quantity
1. TB1016 device	1
2. Terminal Block (F/E/B)	0/0/1
3. D-Sub Connector (F/E/B)	0/0/1
4. Lead Cable (24-pin)	1
5. USB 3.0 Cable	1
6. Grippers (F/E/B)	5/10/20



The diagram illustrates the components included in the packing list. It shows two device models: TB1016F/E (top) and TB1016B/B+ (bottom). A Terminal Block and a D-Sub Connector are shown between the devices. To the right, there is a Lead Cable (24-pin), a USB 3.0 Cable, and a set of Grippers (5, 10, and 20-pin).

Software and Manual Download links at:
<http://www.acute.com.tw>

Acute

Acute Technology Inc.

PC-based T&M Instruments Tel: +886-2-2999-3275 E-mail: service@acute.com.tw <http://www.acute.com.tw>