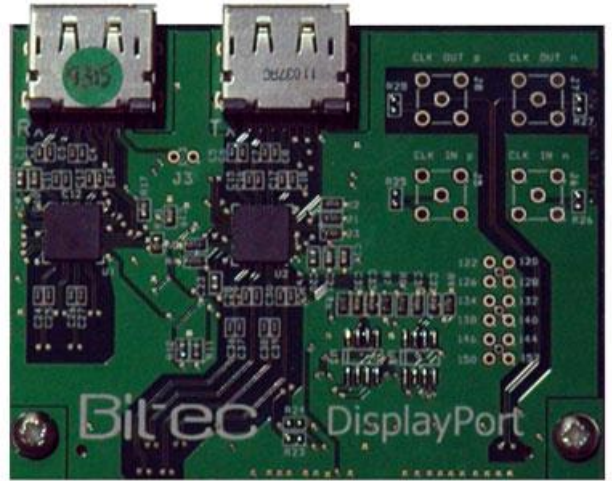


Product Brief : DisplayPort Daughter Card

The Bit-ec DisplayPort daughter card allows developers a rapid prototyping DisplayPort solution. The board incorporates DP 1.2 re-drivers to eliminate signal integrity issues when running at 5.4Gbps.

The daughter card is designed to operate with the Bit-ec DisplayPort IP Core. Together with an Altera development kit, the daughter card provides both a capable development platform as well as a useful DisplayPort debug tool.

Bit-ec also offer a tailoring service for bespoke designs. For more information contact Bit-ec.

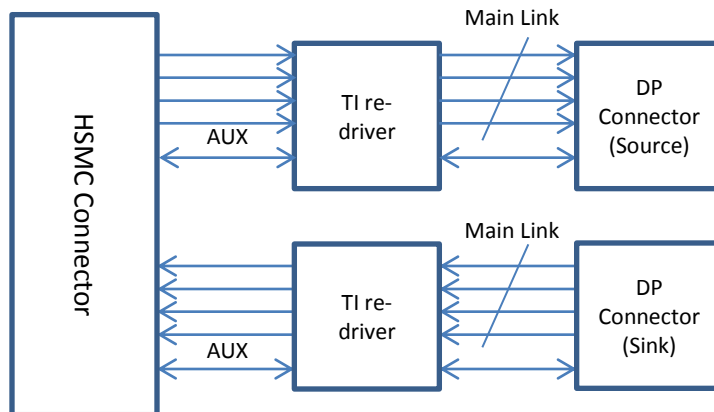


Features

- Supports DisplayPort 1.2 HBR2 (5.4Gbps)
- Integrated TI DP re-driver on source and sink signal path
- Compatible with Altera GX dev kits (Cyclone, Arria and Stratix)
- Clock and i/o expansion interface

Compatibility

- Cyclone V
- Arria II and V
- Stratix I, IV and V



立野電腦

EXT営業部

E-mail : sales@dsp-tdi.com

〒198-0063 東京都青梅市梅郷5-955 TEL.0428-77-7000 FAX.0428-77-7010

URL [http : //www.dsp-tdi.com/](http://www.dsp-tdi.com/)