

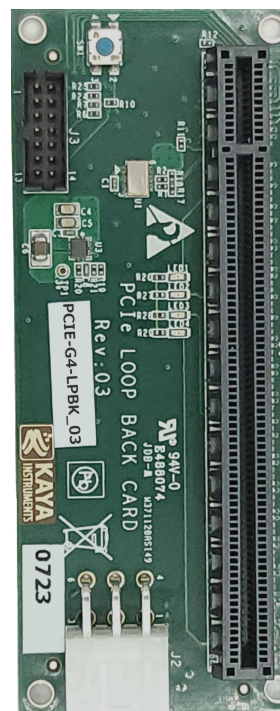
## PCIe Gen4 x16 lanes Loopback Test Board

### Overview

The **PCIe Gen 4 x16 lanes loopback tester board** enables developers and assembly factories to test and characterize the **PCIe** board interfaces. The board features full differential loopbacks on all the **PCIe** signals, JTAG interface. It also provides a 100MHz reference clock as per PCIe specification. The PCIe loopback card designed for signal integrity to support Gen4 speed of differential lanes.

### Features

- PCIe FPGA board testing during development
- PCIe board electrical validation
- PCIe board testing at assembly facilities



### Specifications

- Provides loopbacks on differential signals
- JTAG interface
- Reset button
- 100MHz reference clock

以下の型番でお問い合わせください。

- KY-PCIE-G4-LPBK

### About PCIe

PCI Express (Peripheral Component Interconnect Express) is a high-speed serial computer expansion bus standard, including high maximum system bus throughput, low I/O pin count and small physical footprint, improved performance scaling for bus devices, detailed error detection and reporting mechanism (Advanced Error Reporting, AER), native hot-swap functionality and I/O virtualization. The primary purpose of an expansion card is to provide or expand on features not offered by the motherboard.



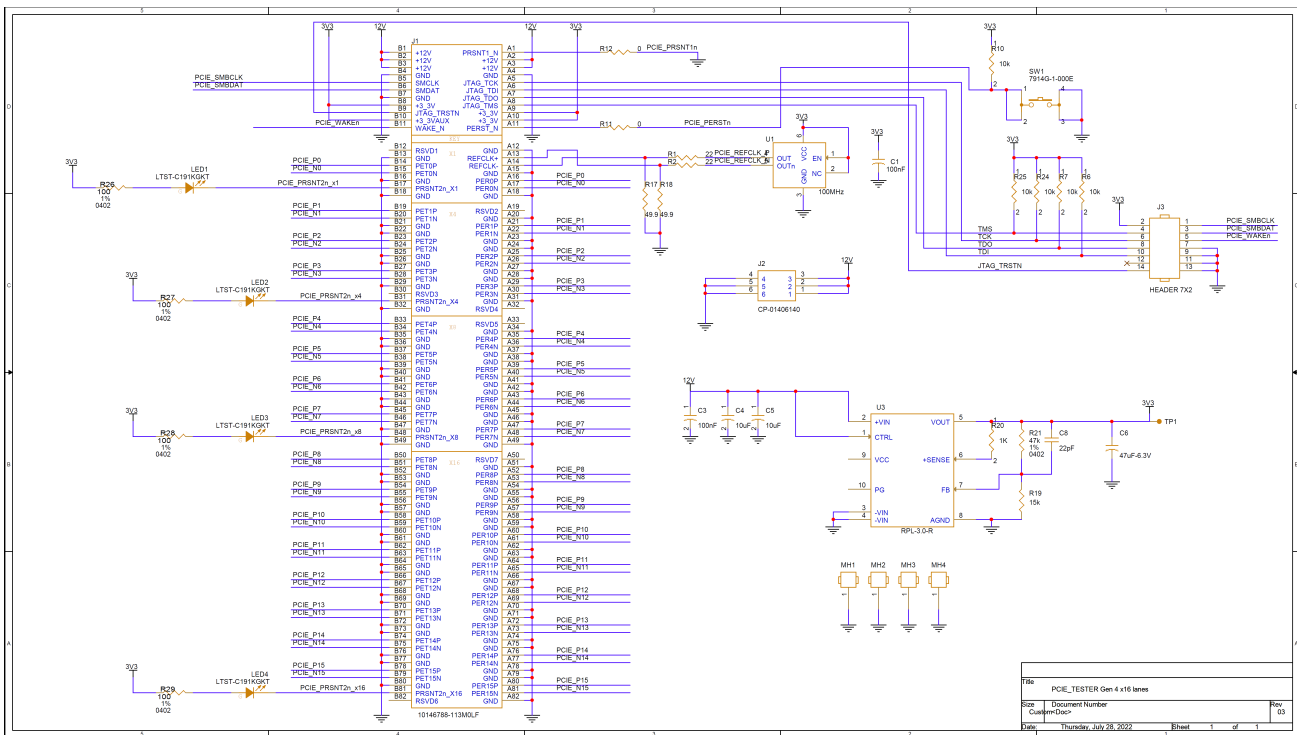
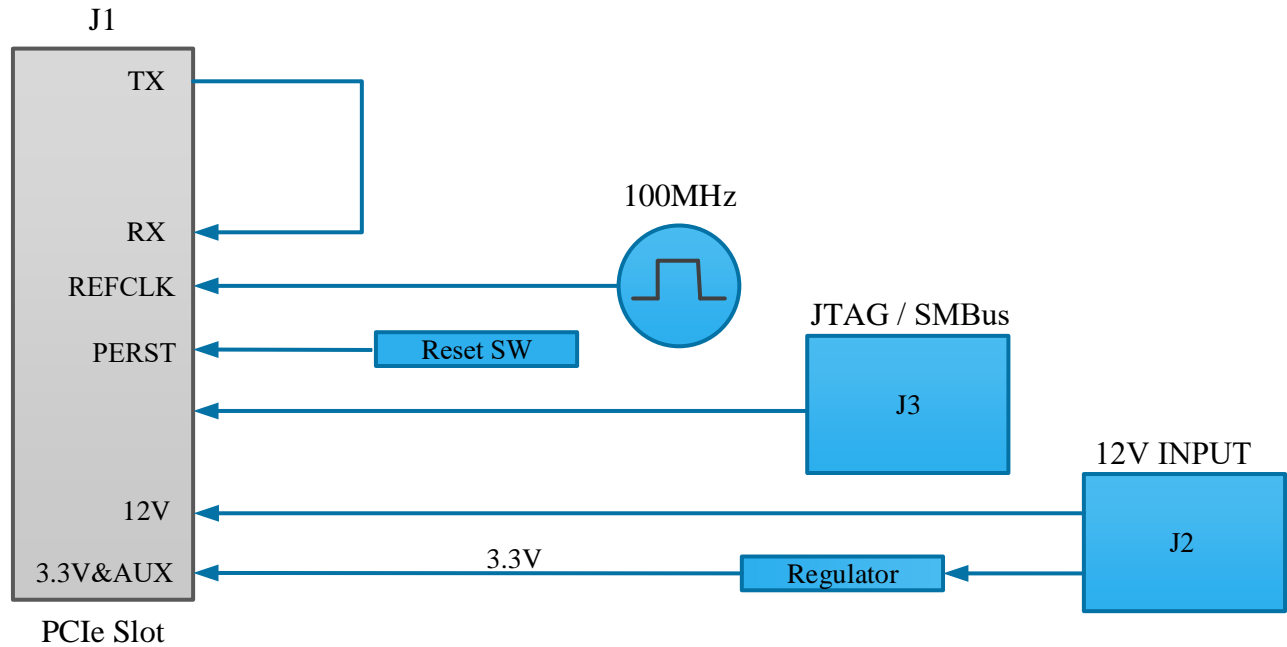
KAYA Instruments© Premium vision solutions

お問い合わせは 国内正規代理店  
立野電脳株式会社  
[sales@dsp-tdi.com](mailto:sales@dsp-tdi.com)

 **立野電脳** EXT営業部  
E-mail : [sales@dsp-tdi.com](mailto:sales@dsp-tdi.com)  
〒198-0063 東京都青梅市梅郷5-955 TEL.0428-77-7000

**URL** <https://www.dsp-tdi.com/>

## Block Diagram



KAYA Instruments© Premium vision solutions

お問い合わせは 国内正規代理店  
立野電脳株式会社  
sales@dsp-tdi.com

**立野電脳** EXT営業部  
E-mail : sales@dsp-tdi.com  
〒198-0063 東京都青梅市梅郷5-955 TEL.0428-77-7000

URL <https://www.dsp-tdi.com/>