

Beagle™

I2C/SPI

Protocol Analyzer

Beagle I2C/SPIは2005年発売以来ハードウェアの変更なしで世界中で売れ続けているI2C,SPIの定番プロトコルアナライザ。機器開発、検査、トラブル対応、セキュリティ用途などで大量にご利用いただいています。バス状態をプロトコルデコードしてキャプチャしながら表示、フィルタ、サーチをライブで行えるアナライザGUIアプリのData Centerと、カスタムアプリが作成できるAPIが付属します。お問い合わせは立野電脳(株) sales@dsp-tdi.com

Key Features

Real-Time Non-Intrusive Monitoring

- I2C (SMBus supported): Up to 5 MHz
- SPI: Up to 24 MHz
- MDIO (Clause 22 and 45): Up to 2.5 MHz¹

Data Center™ Software

- Real-time display, search, and filtering of captured data
- Bit-level timing down to a 20 ns resolution
- Capture traces to >25 GB

Beagle API

- Create custom software applications
- Example files included
- Cross-platform support for Windows, Linux, macOS

USB Bus-Powered

- Portable
- No extra power adapters needed

Quality

- CE, REACH, RoHS
- Manufacturing: ISO 9001, ISO 13485, AS9100C, ITAR
- One year warranty



An ever-wider array of devices and the increasing pressure to minimize costs means that you need to get the most out of your embedded systems interface tools - and the Beagle I2C/SPI Protocol Analyzer is expressly designed to enable your competitive edge.

The Beagle I2C/SPI Protocol Analyzer is the ideal tool for debugging and monitoring traffic on your I2C, SPI, or MDIO based applications. The Beagle analyzer provides a high performance bus monitoring solution in a small, portable package. It provides fast, interactive, real-time visibility into the protocol layer of your embedded system.

Enhanced Visibility

- See data displayed in real time
- Interactive debugging: make a change and see the results in real time
- Real-time filter displays user-defined views
- Longer recording buffer than a scope (data streamed to PC's memory)
- Collaborate easily by sharing saved captures with colleagues with Data Center Software

I2C and SPI Peripherals Use case

Using the Beagle I2C/SPI analyzer, users can easily debug the communication between a master and slave I2C and SPI peripherals such as EEPROMs, accelerometers, pressure sensors, temperature sensors, touch sensors, and much more.

I2C in Video Use Case

Video display standards such as VGA, DVI, and HDMI all contain I2C as a means to easily transmit information such as maximum resolution and frequencies between the video controller and the monitor. The Beagle I2C/SPI analyzer can be used to easily monitor and identify any communication issues on the I2C lines for display applications.

¹ MDIO monitoring is available in the current versions of the API and version 2.20 of Data Center



Applications

Sensors Accelerometers Pressure Temperature Light	Video VGA DVI HDMI	Industrial and Home Automation Motor controls Lighting controls	Audio Processing Codecs Signal Processing	Scan for Video 
--	------------------------------------	--	--	--

Specifications

Software

The Data Center™ Software is a bus monitoring software application that displays captured USB, I2C, SPI, and CAN bus data in true real-time through the Beagle™ line of hardware protocol analyzers and the Komodo™ line of CAN interfaces.

Data Center Software Features

- LiveDisplay™ technology allows for real-time interactive display and analysis of I2C (SMBus decoding supported), SPI, or MDIO traffic
- LiveFilter™ and LiveSearch™ tools allow for real-time interactive filtering and searching
- Collaborate easily by sharing capture files
- Export saved capture files to CSV format

Beagle API and LabVIEW Support

- Create custom applications using the flexible, powerful, and well-documented Beagle API
- 32- and 64-bit support for C/C++/C#, Python, .NET, VB.Net, VB 6
- LabVIEW Instrument drivers

Operating Systems Supported (32-bit and 64-bit)

- Windows: 7, 10, 11, and later
- Linux: Red Hat, SuSE, Ubuntu, Fedora
- macOS: 13 and later

Hardware

Target Data Monitoring

- I2C: Up to 5 MHz
- SPI: Up to 24 MHz
- MDIO: Up to 2.5 MHz

Target Bus Interface

I2C, SPI, MDIO

Host Bus Interface

USB 2.0
Type B receptacle

Target Bus Cable

- 10-pin ribbon cable
- 1.27 mm (0.05") pitch
- 130.175 mm (5 1/8") length

Target Bus Connector

- Type: 2x5 IDC female, 2.54 mm (0.10") pitch
- Pinout: Power: GND (2,10), NC/+5V (4,6)
- I2C: SCL (1), SDA (3)
- SPI: MISO (5), SCLK (7), MOSI (8), SS (9)
- MDIO: MDC (7), MDIO (8)

DC Characteristics

- Target Power: +5V, 25 mA max
- I2C/SPI/MDIO Signal: 3.3V, 10 mA

Dimensions (W x D x L)

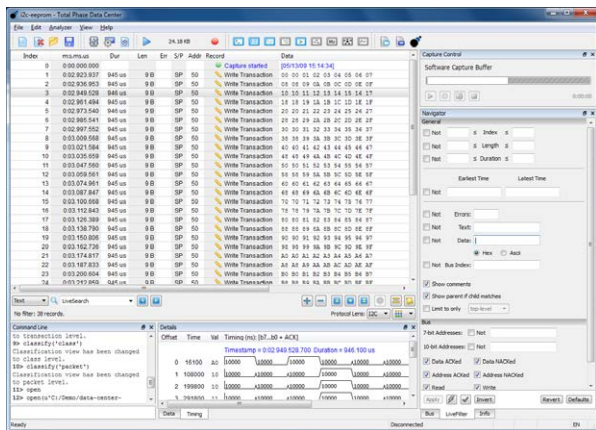
55.6 x 22.2 x 89 mm (2.19" x 0.87" x 3.5")

Weight

64 g (0.14 lbs)

Operating Temperature

10 to 35 °C (50 to 95 °F)



Data Center

2005年の発売以来国内では すぐに利用できるように 10ピン個別信号線ケーブルとソフトウェアDVDを同梱しています。

Ordering information

国内品名: Beagle I2C/SPI(J) (Beagle I2C/SPIでもOK)
 国内型番: TP320121A (TP320121 でもOK)

Country of Origin: USA

HTS: 9030890100

ECCN: EAR99

Beagle I2C/SPI(J) TP320121A 内容



立野電脳 EXT営業部
E-mail : sales@dsp-tdi.com
〒198-0063 東京都青梅市梅郷5-955 TEL.0428-77-7000

URL <https://www.dsp-tdi.com/>